

Stock Code: **MHU15007510-DP**

MHU15007510-DP 1.5 x 0.75 x 254 Ultra

STAMPING DETAILS:

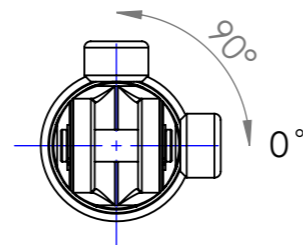
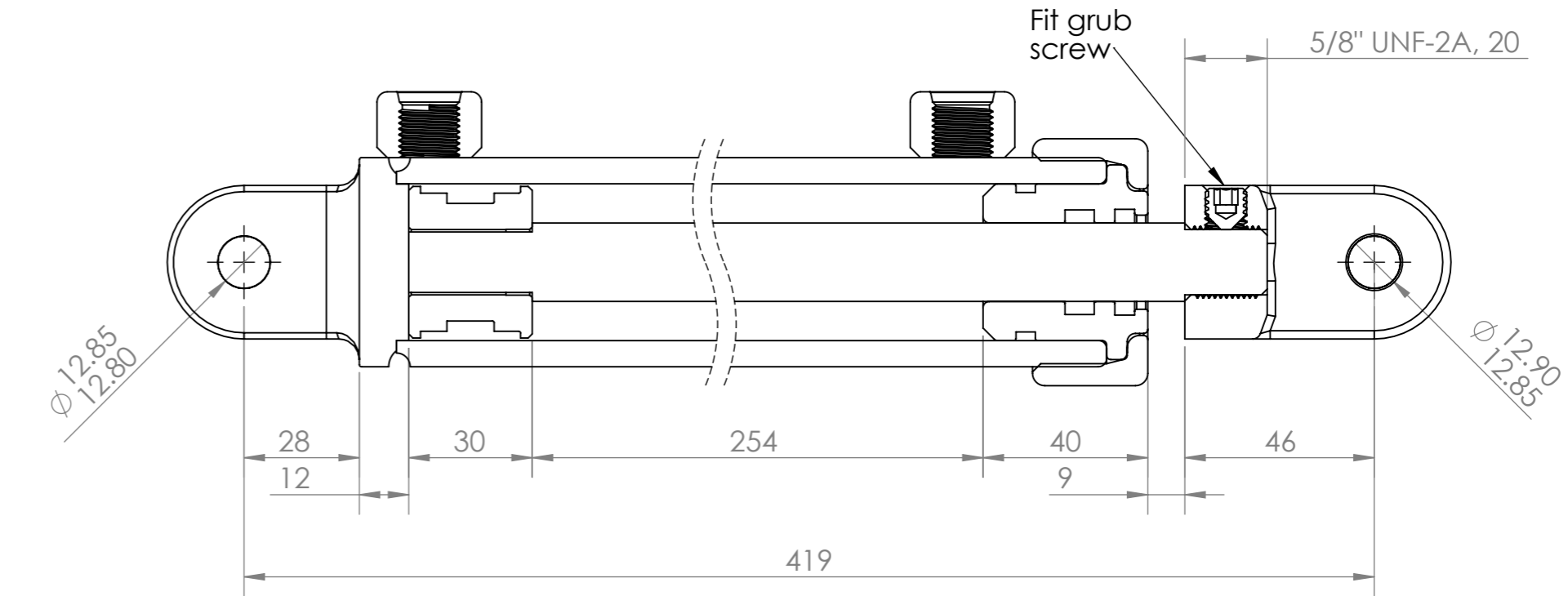
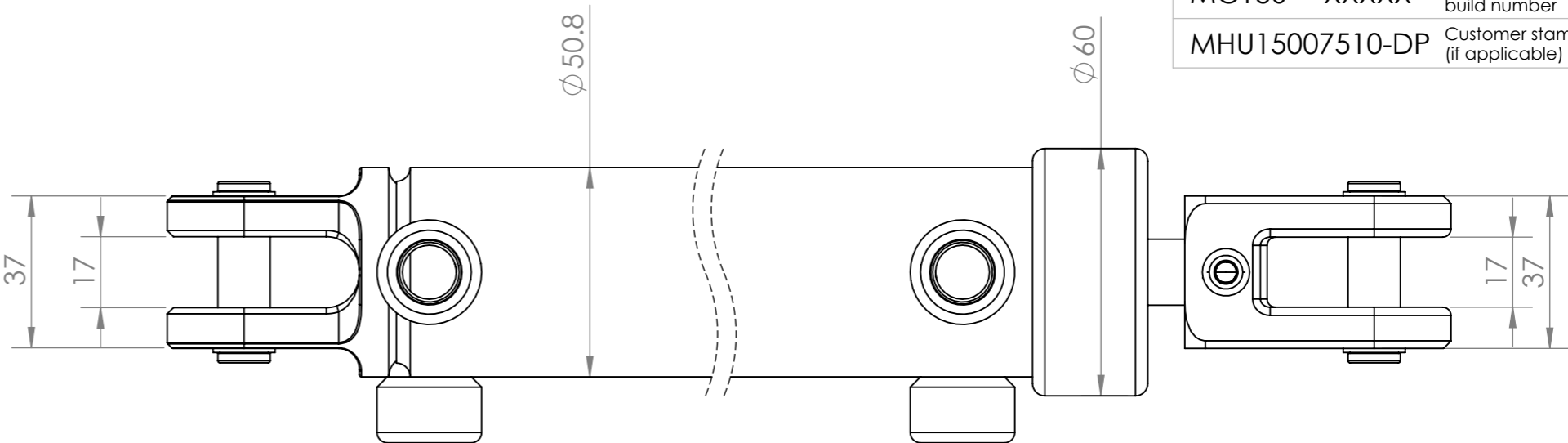
|                |  |
|----------------|--|
| Stamping Type: | Pin                                      |
| MOTUS XXXXX    | "X" Refers to MOTUS 5 digit build number |
| MHU15007510-DP | Customer stamping text (if applicable)   |

|                                |                |    |
|--------------------------------|----------------|----|
| Company:                       | C&M            |    |
| Cylinder Name: (if applicable) | MHU15007510-DP |    |
| Cylinder Type:                 | Ultra          | DA |
| Operating Pressure:            | 4000 PSI       |    |
| Safety Rating:                 | 2.5 : 1        |    |
| Weight:                        | 4.60           | kg |

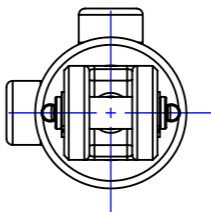
|               |          |
|---------------|----------|
| Motus Decal:  | Yes      |
| Paint/Finish: | Charcoal |
| Seal Kit :    | 6106834  |

|                             |         |     |    |
|-----------------------------|---------|-----|----|
| Bore Dia / Finished Length  | Ø 1.5"  | 317 | mm |
| Wall Thickness :            | 1/4     |     |    |
| Shaft Dia / Finished Length | Ø 0.75" | 353 | mm |
| Material :                  | 1045    |     |    |
| Piston Thread Details:      | Ø 0.63  | 30  | mm |

| BASE   | SPEAR   |
|--|---|
| Mount: Clevis Base<br>BFCL15040M-0.5<br>Part No: 6007614 | Mount: Threaded Clevis<br>CL0.5-17-46<br>Part No: 6006283 |
| Pin Size Ø : 0.5"  | Pin Size Ø : 0.5"   |
| Bush Type: - L Bore: No                                  | Bush Type: - L Bore: No                                   |
| Bush Size: -   | Bush Size: -  |
| Base Bearing: -  | Shaft Bearing : -   |
| Grease Nipple: -   | Grease Nipple: -  |
| Port:<br>9/16 Female UNO -6                              | Port:<br>9/16 Female UNO -6                               |
| Orientation: 0 & 90                                      | Orientation: 0 & 90                                       |
| Drill Size: 3 mm   | Drill Size: 3 mm  |
| Drill Distance: 8 mm                                     | Drill Distance: 30 mm                                     |



Base View



Front View

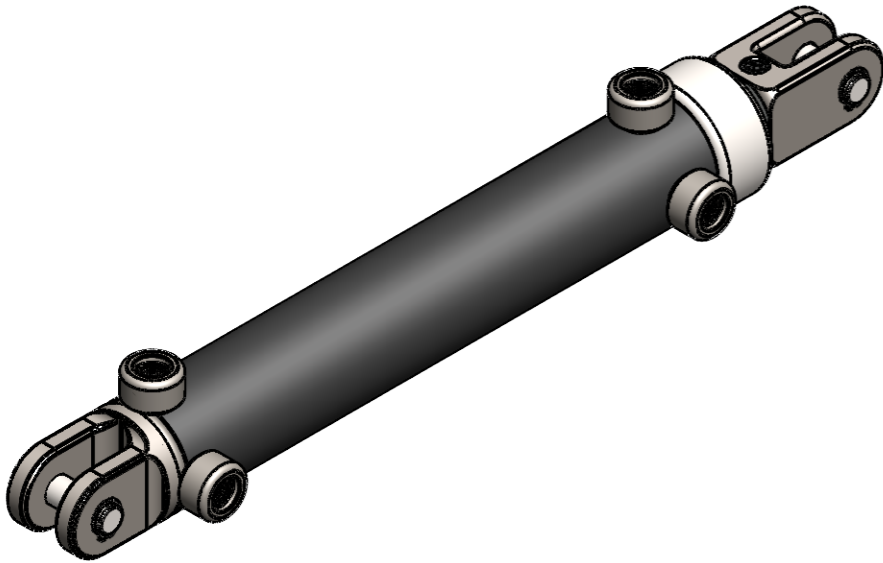
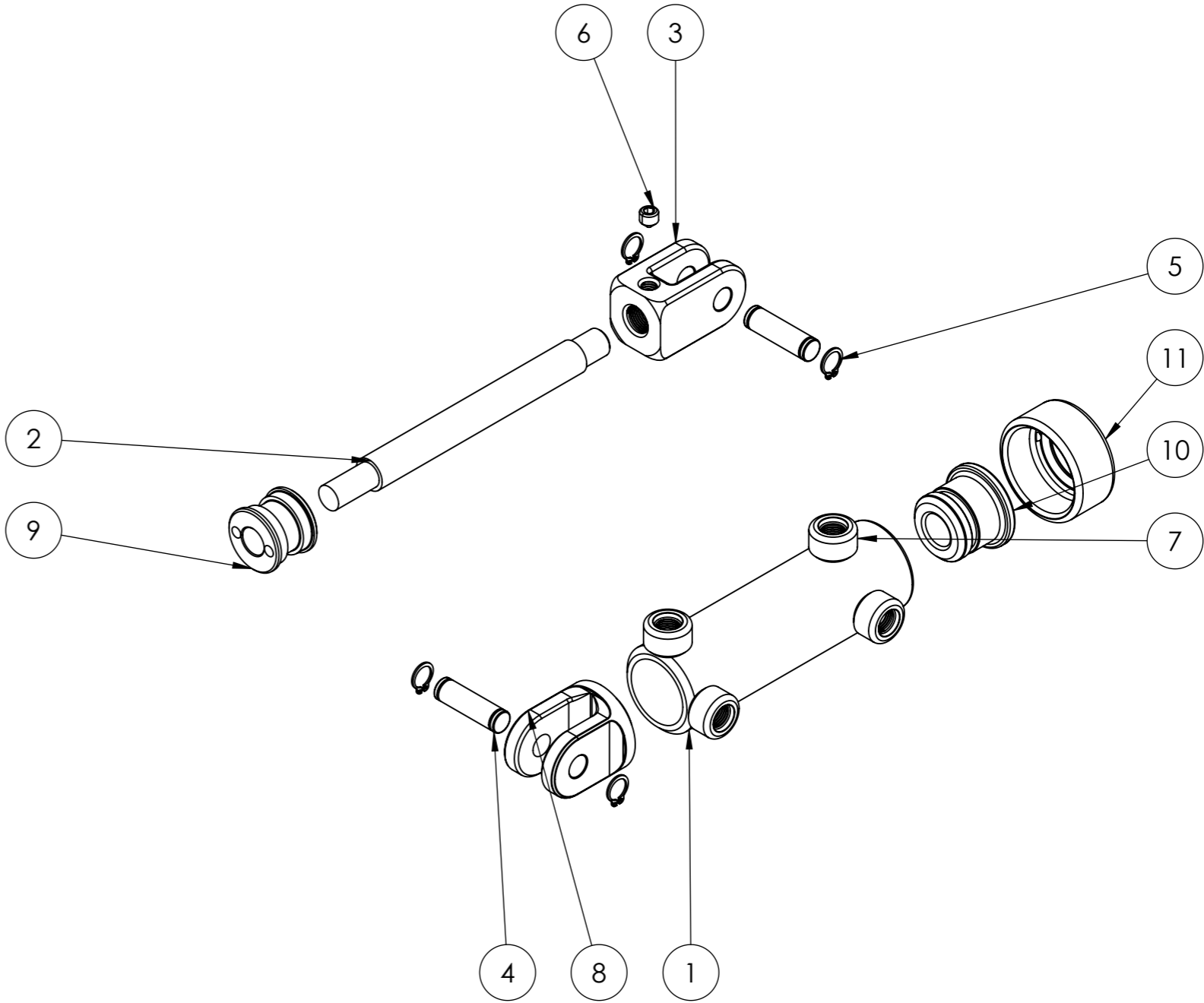
|                             |            |       |
|-----------------------------|------------|-------|
| Drawing Approval (Customer) |            |       |
| Name:                       | Signature: | Date: |
|                             |            |       |

|                  |     |       |
|------------------|-----|-------|
| Stroke :         | 254 | ±3 mm |
| Closed Centres : | 419 | ±3 mm |
| Open Centres :   | 673 | ±3 mm |

Special Instructions:

|                        |     |
|------------------------|-----|
| BUILD NUMBER:          |     |
| Sales Order Number:    |     |
| Invoice Number:        |     |
| Customer Order Number: |     |
| Order Date:            |     |
| Date of Dispatch:      |     |
| Quantity:              |     |
| Multiple order:        | of: |

| ITEM NO. | PART NUMBER | DESCRIPTION                        | QTY. |
|----------|-------------|------------------------------------|------|
| 1        | -           | 5814- BARREL                       | 1    |
| 2        | -           | 5814- SHAFT                        | 1    |
| 3        | 6006283     | CL0.5-17-46 Threaded Clevis-5/8UNF | 1    |
| 4        | 6007611     | 1-2" Pin                           | 2    |
| 5        | 6007612     | 1-2" External Circlip              | 4    |
| 6        | 9009427     | 3/8 UNF Grub Screw                 | 1    |
| 7        | 6006856-2   | -6 UNO FM Port 9/16                | 4    |
| 8        | 6007614     | BFCL15040M-0.5 Pin                 | 1    |
| 9        | 6006208-1   | WR150-38P Piston                   | 1    |
| 10       | 6008791     | UH150075 Ultra Head                | 1    |
| 11       | 6008790     | UC150 1.5" Ultra Cap               | 1    |



**Note:**

- All imperial threads are machined to 2A, 2B specification
- All metric threads are machined to 6g, 6H specification
- All pin holes machined to D9 tolerance unless specified otherwise
- All machine surface finishes are 3.2µm Ra
- Close/Open centres to ±3mm tolerance